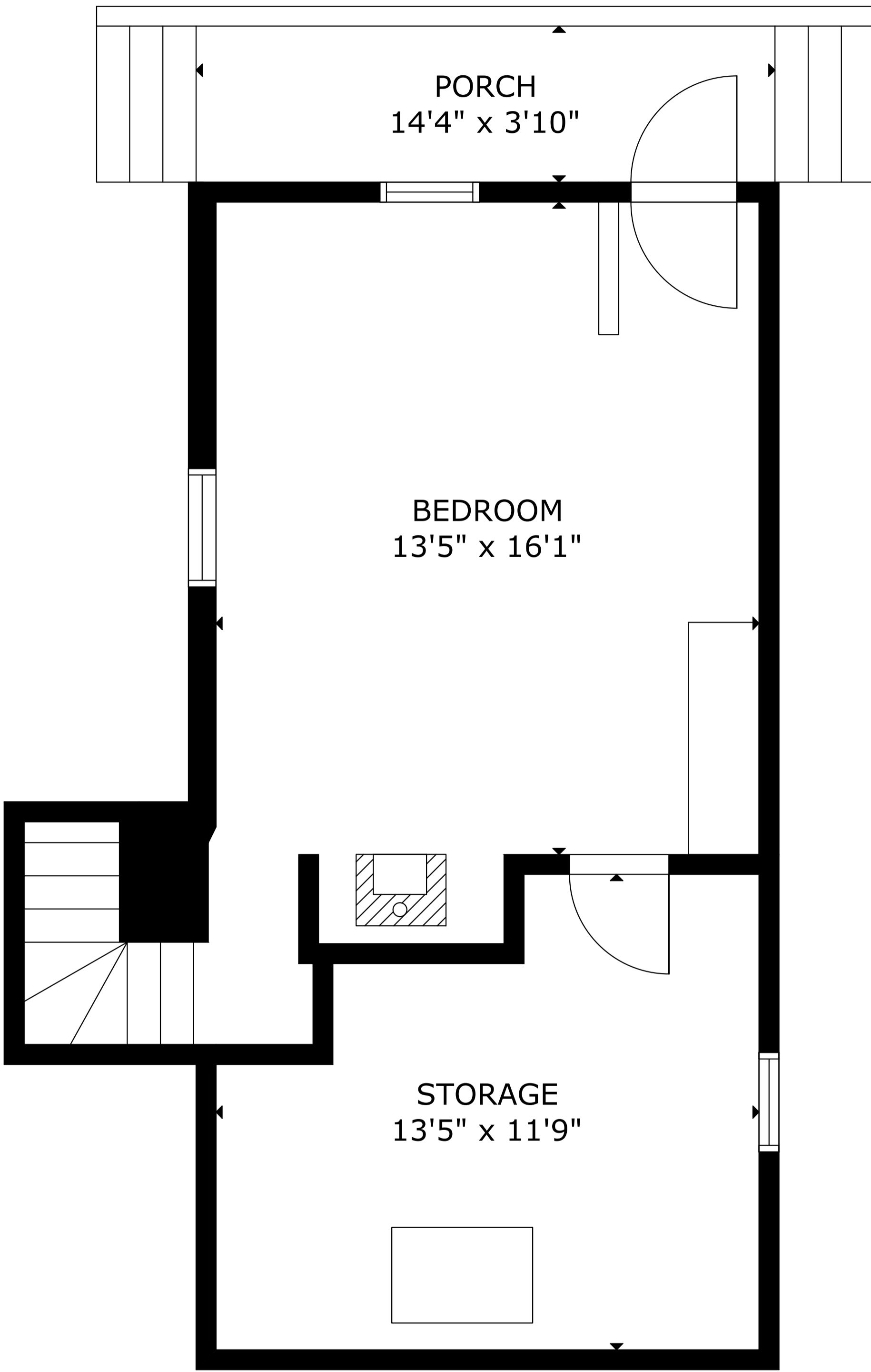
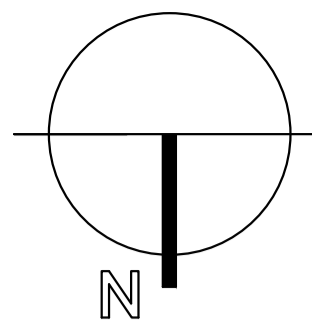
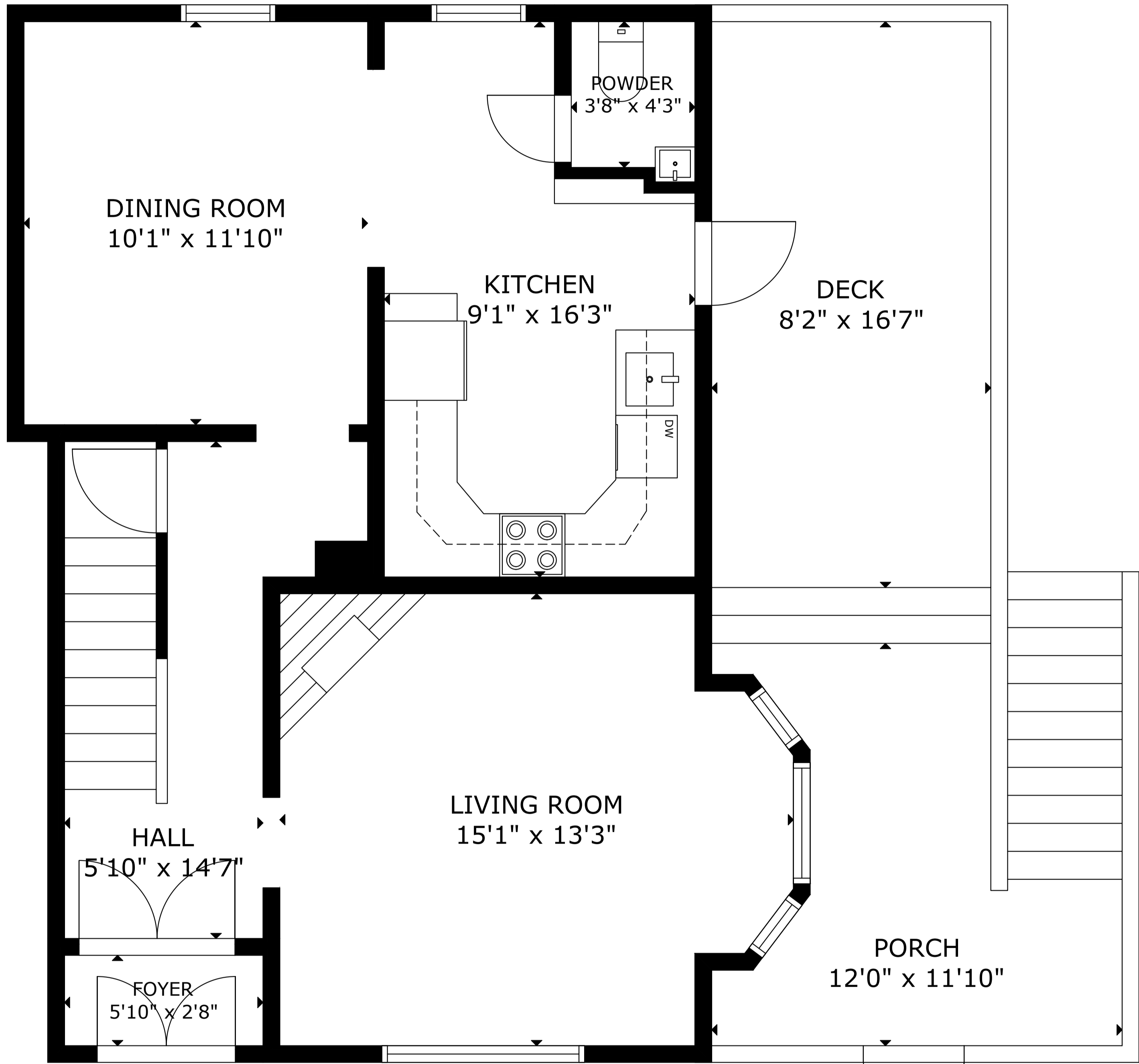


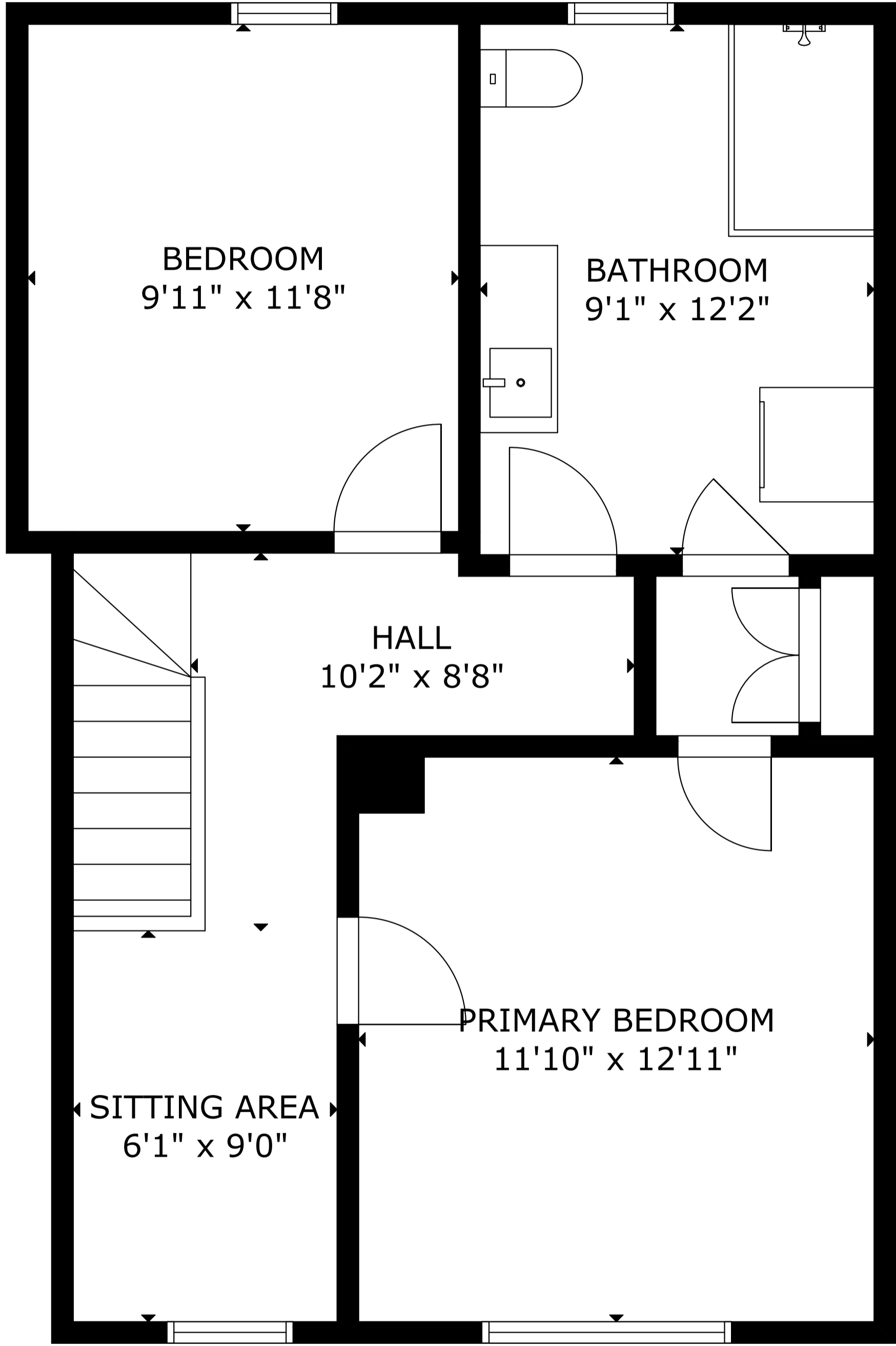
52 Pelham St, Lunenburg NS B0J 2C0, CA



FLOOR 1



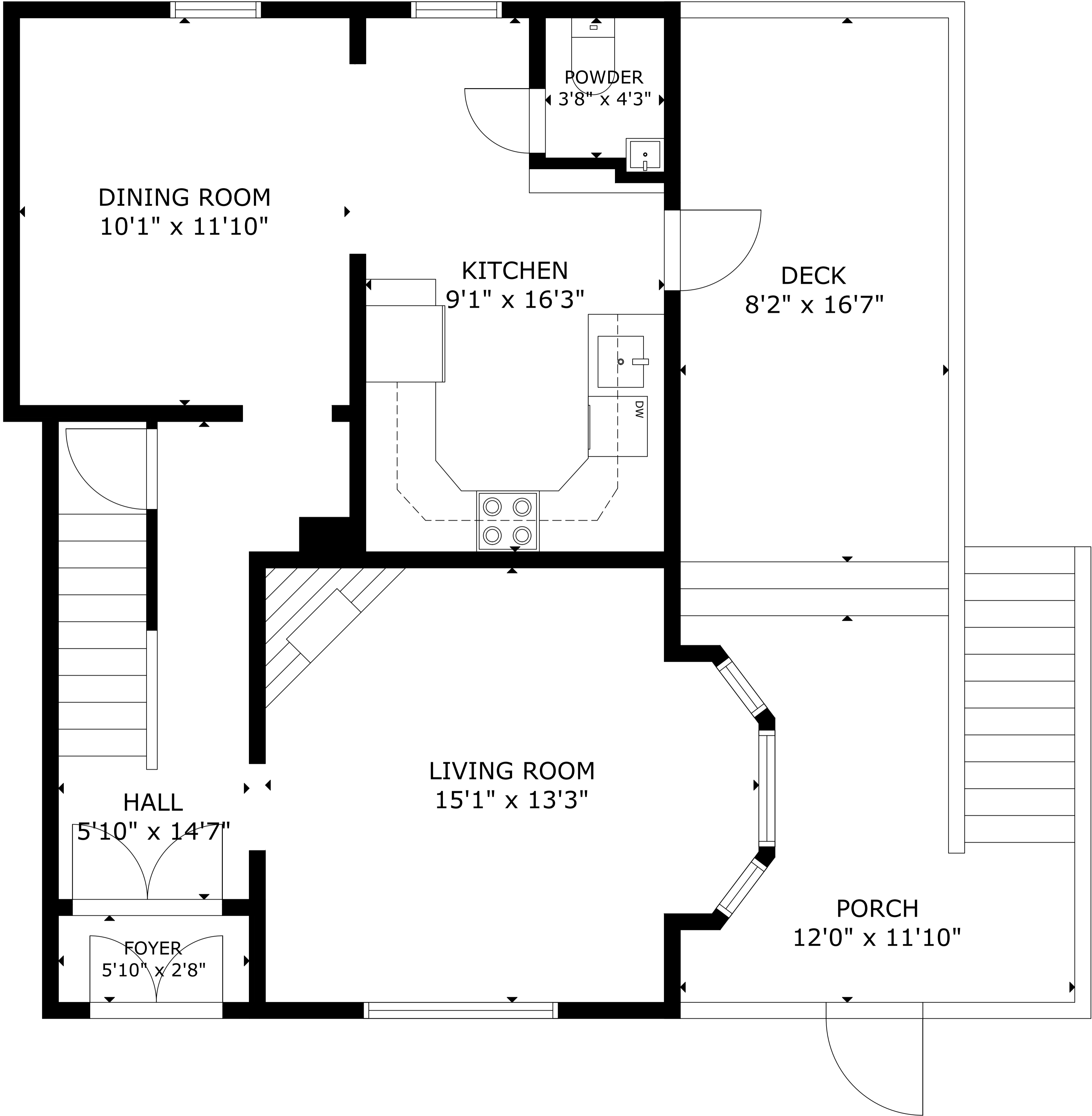
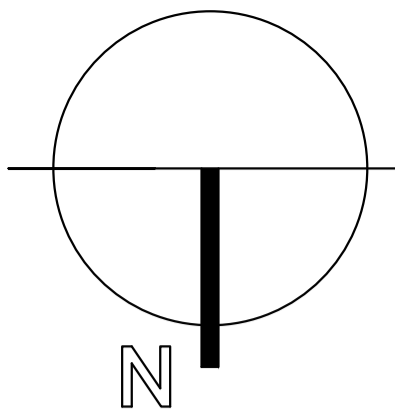
FLOOR 2



FLOOR 3

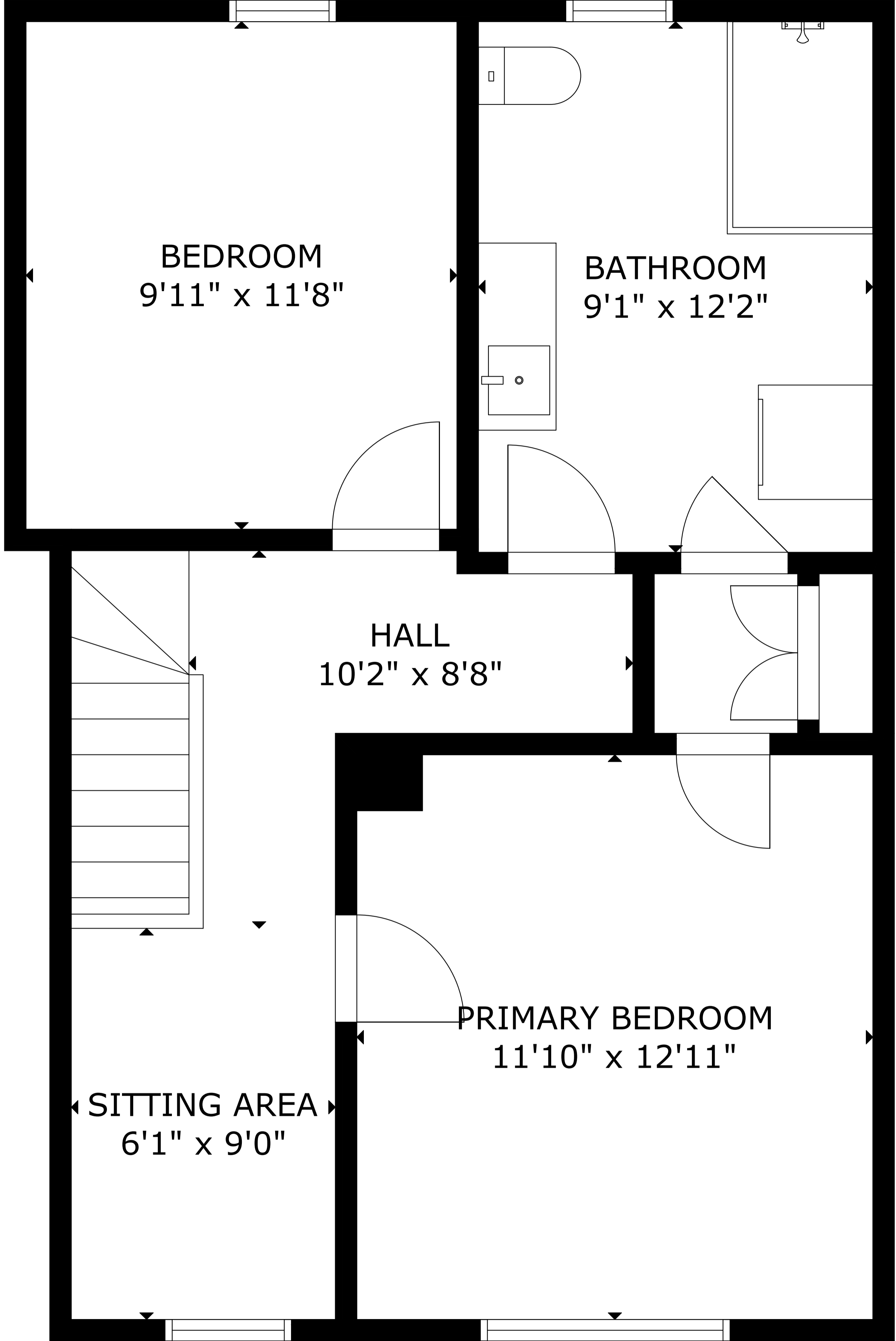
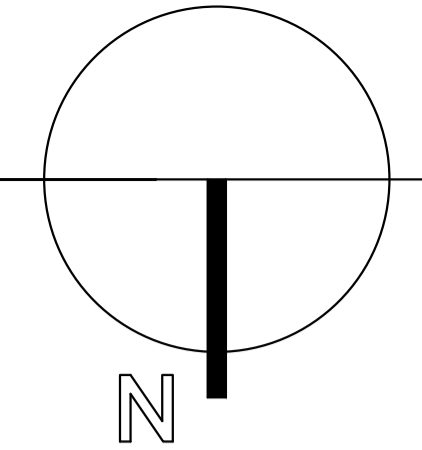
GROSS INTERNAL AREA
TOTAL: 1,556 sq.ft
FLOOR 1: 407 sq.ft, FLOOR 2: 589 sq.ft, FLOOR 3: 560 sq.ft
EXCLUDED AREAS: PORCH: 149 sq.ft, DECK: 136 sq.ft
SIZE AND DIMENSIONS ARE APPROXIMATE, ACTUAL MAY VARY

52 Pelham St, Lunenburg NS B0J 2C0, CA



GROSS INTERNAL AREA
TOTAL: 1,556 sq.ft
FLOOR 1: 407 sq.ft, FLOOR 2: 589 sq.ft, FLOOR 3: 560 sq.ft
EXCLUDED AREAS: PORCH: 149 sq.ft, DECK: 136 sq.ft
SIZE AND DIMENSIONS ARE APPROXIMATE, ACTUAL MAY VARY

52 Pelham St, Lunenburg NS B0J 2C0, CA



GROSS INTERNAL AREA

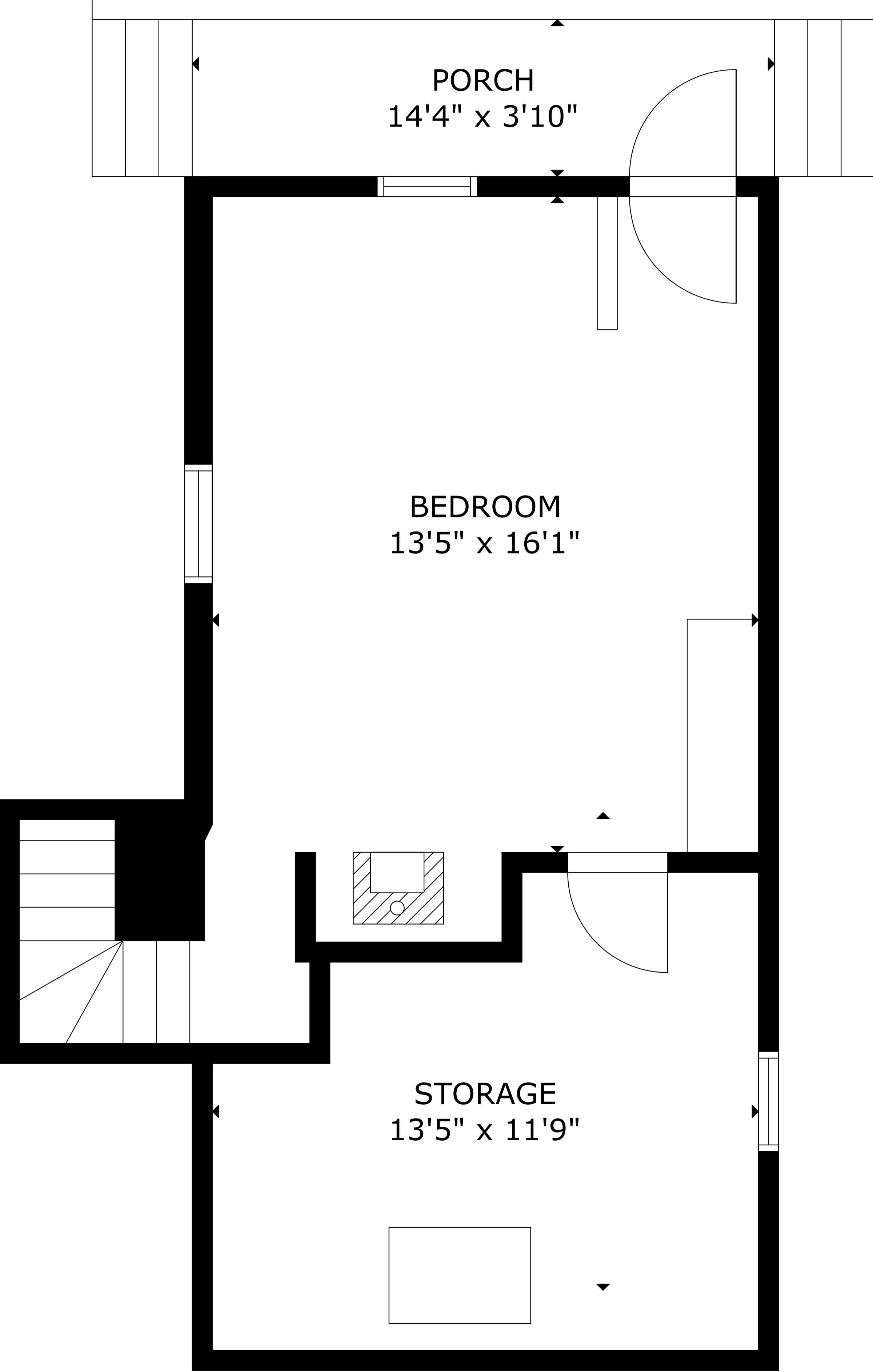
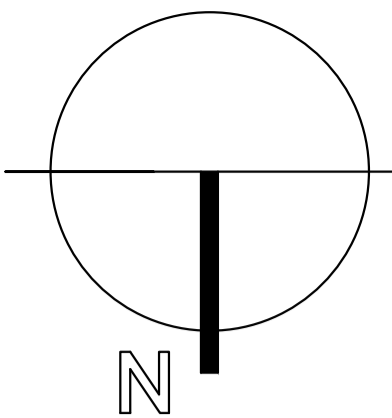
TOTAL: 1,556 sq.ft

FLOOR 1: 407 sq.ft, FLOOR 2: 589 sq.ft, FLOOR 3: 560 sq.ft

EXCLUDED AREAS: PORCH: 149 sq.ft, DECK: 136 sq.ft

SIZE AND DIMENSIONS ARE APPROXIMATE, ACTUAL MAY VARY

52 Pelham St, Lunenburg NS B0J 2C0, CA



GROSS INTERNAL AREA
TOTAL: 1,556 sq.ft
FLOOR 1: 407 sq.ft, FLOOR 2: 589 sq.ft, FLOOR 3: 560 sq.ft
EXCLUDED AREAS: PORCH: 149 sq.ft, DECK: 136 sq.ft
SIZE AND DIMENSIONS ARE APPROXIMATE, ACTUAL MAY VARY