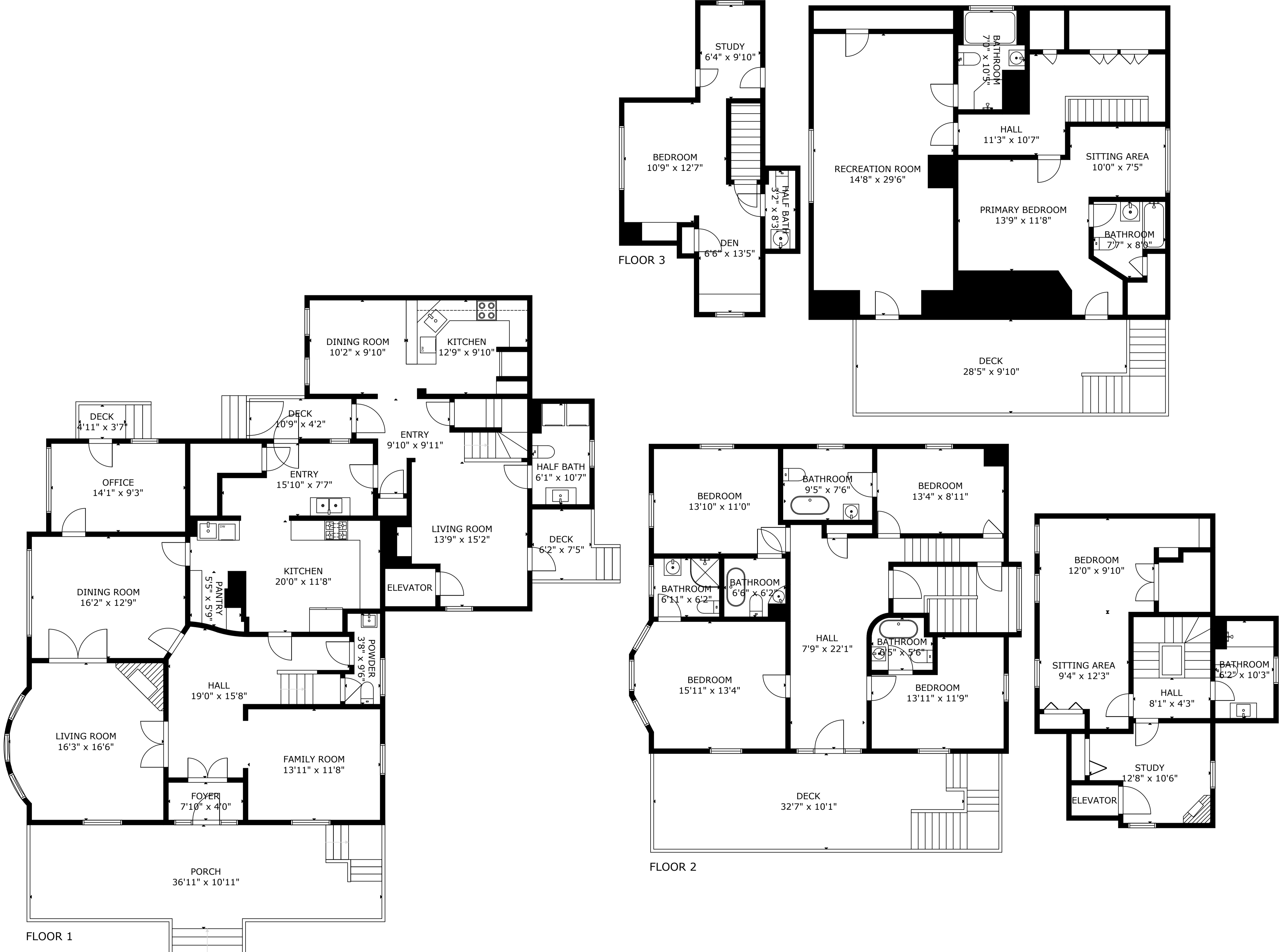
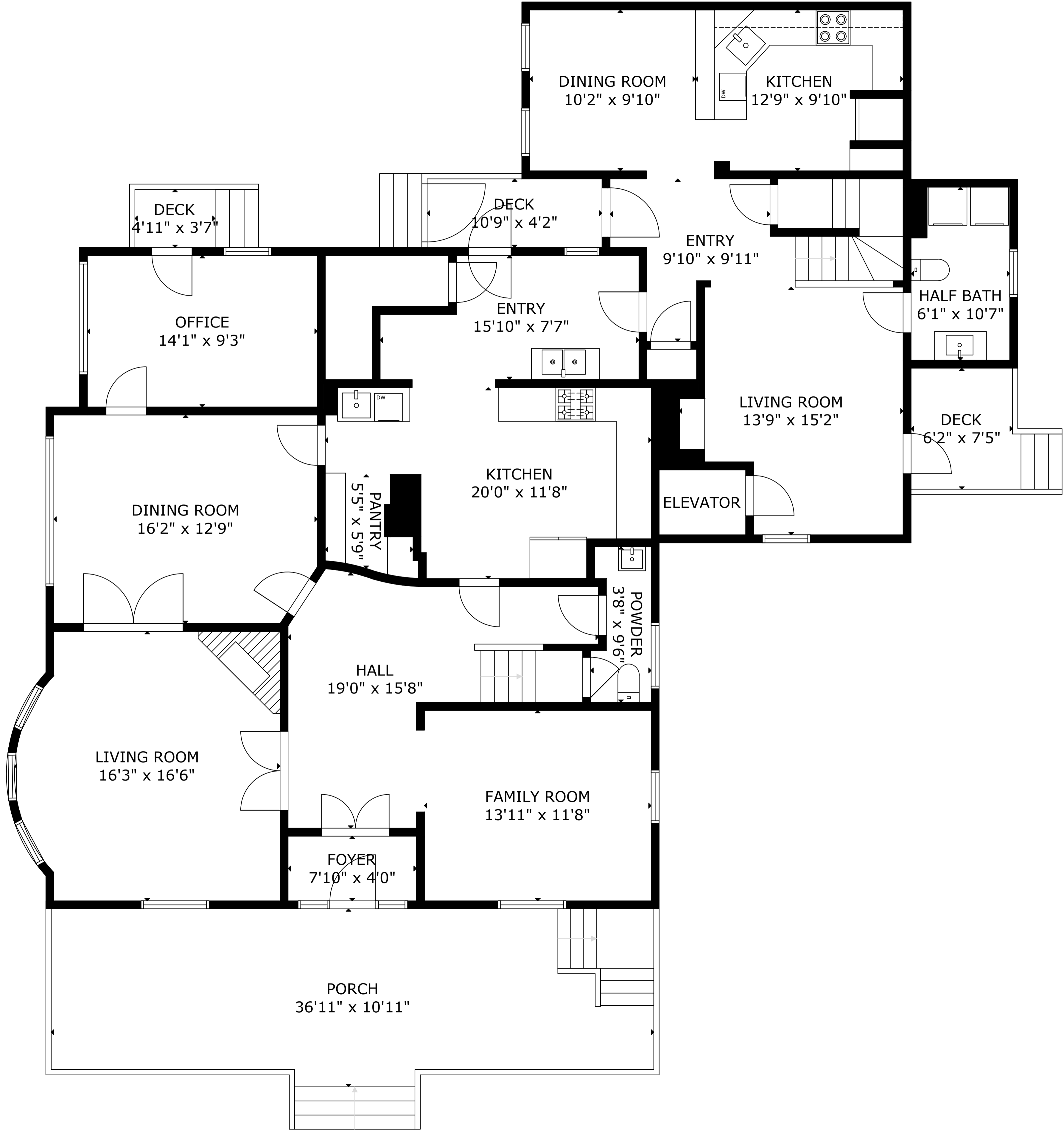


# 216 Dufferin Street, Lunenburg NS B0J 2C0, Canada



GROSS INTERNAL AREA  
 TOTAL: 5,409 sq ft  
 FLOOR 1: 2,099 sq ft, FLOOR 2: 1,776 sq ft, FLOOR 3: 1,534 sq ft  
 EXCLUDED AREA: DECK: 110 sq ft, PORCH: 364 sq ft, BALCONY: 318 sq ft  
 SIZE AND DIMENSIONS ARE APPROXIMATE, ACTUAL MAY VARY

# 216 Dufferin Street, Lunenburg NS B0J 2C0, Canada



GROSS INTERNAL AREA

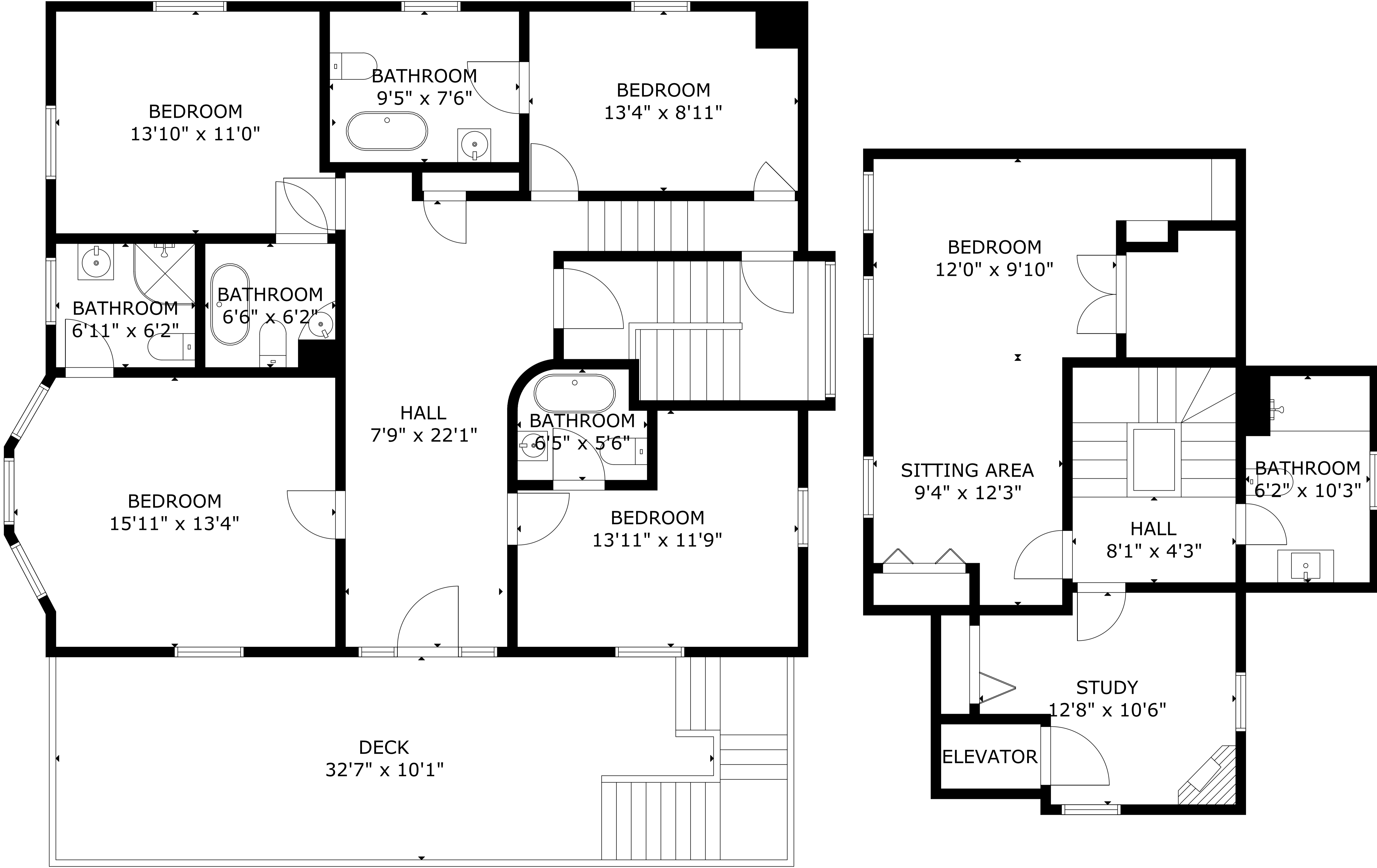
TOTAL: 5,409 sq ft

FLOOR 1: 2,099 sq ft, FLOOR 2: 1,776 sq ft, FLOOR 3: 1,534 sq ft

EXCLUDED AREA: DECK: 110 sq ft, PORCH: 364 sq ft, BALCONY: 318 sq ft

SIZE AND DIMENSIONS ARE APPROXIMATE, ACTUAL MAY VARY

# 216 Dufferin Street, Lunenburg NS B0J 2C0, Canada



GROSS INTERNAL AREA

TOTAL: 5,409 sq ft

FLOOR 1: 2,099 sq ft, FLOOR 2: 1,776 sq ft, FLOOR 3: 1,534 sq ft

EXCLUDED AREA: DECK: 110 sq ft, PORCH: 364 sq ft, BALCONY: 318 sq ft

SIZE AND DIMENSIONS ARE APPROXIMATE, ACTUAL MAY VARY

# 216 Dufferin Street, Lunenburg NS B0J 2C0, Canada



GROSS INTERNAL AREA

TOTAL: 5,409 sq ft

FLOOR 1: 2,099 sq ft, FLOOR 2: 1,776 sq ft, FLOOR 3: 1,534 sq ft

EXCLUDED AREA: DECK: 110 sq ft, PORCH: 364 sq ft, BALCONY: 318 sq ft

SIZE AND DIMENSIONS ARE APPROXIMATE, ACTUAL MAY VARY