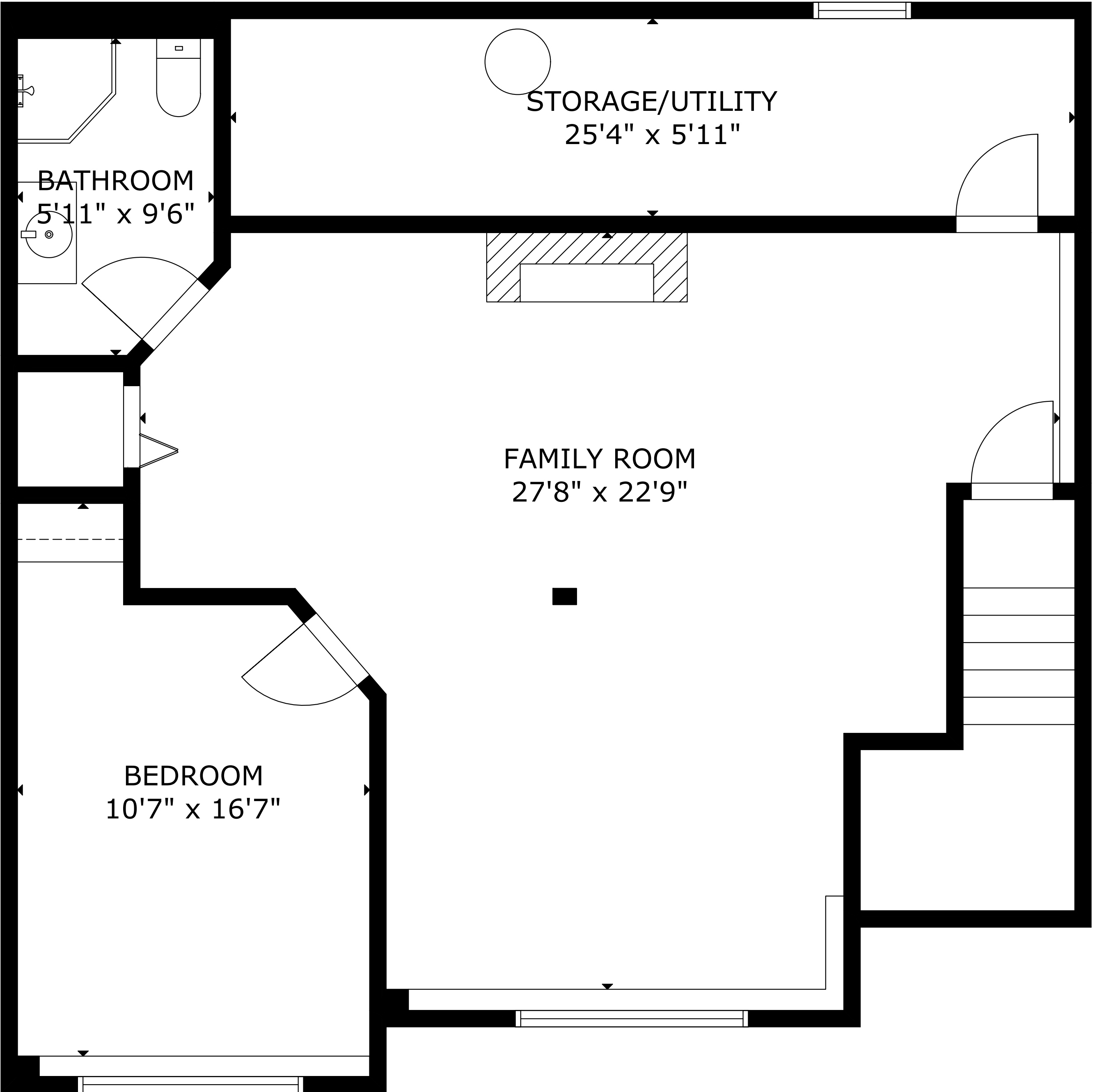
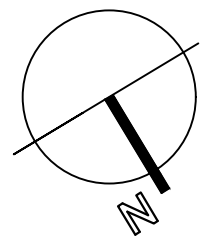
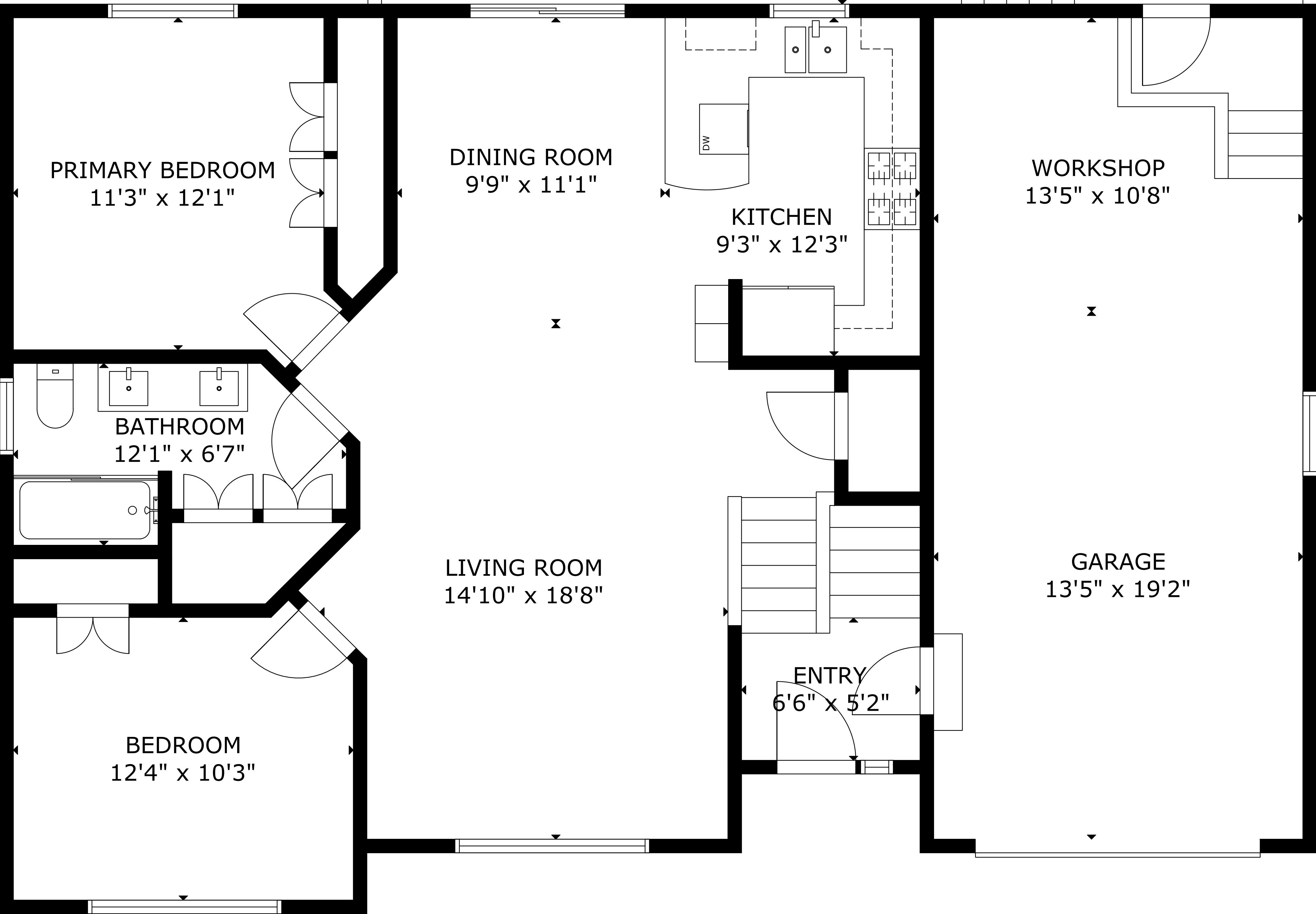


22 Hebb St, Lunenburg NS B0J 2C0, CA

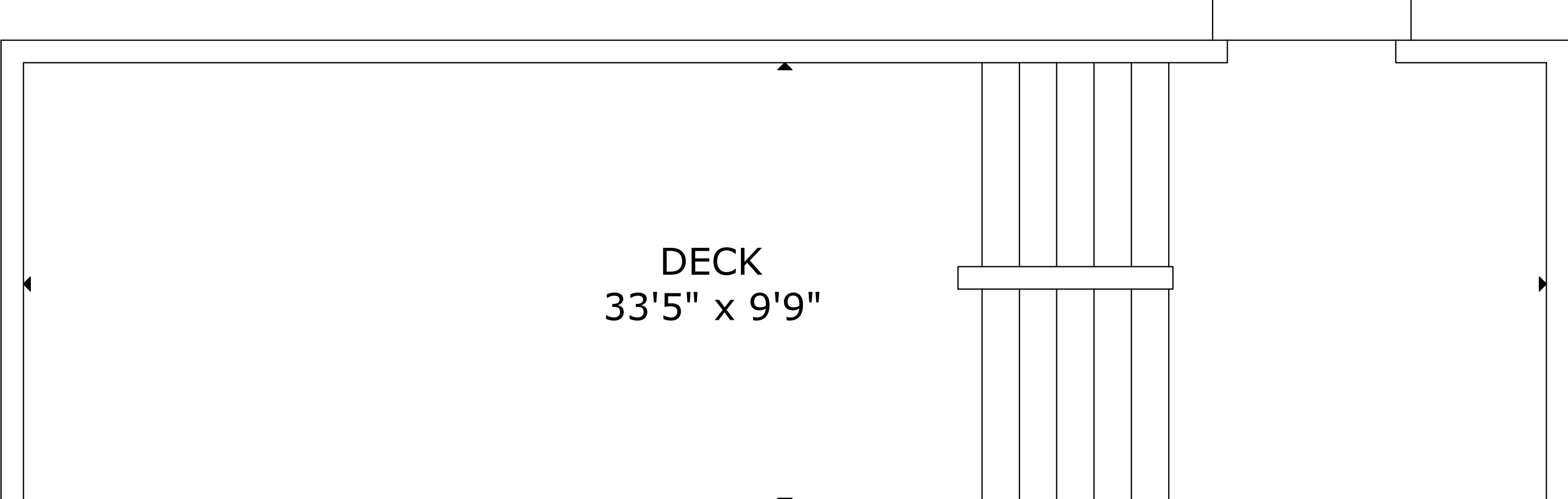


FLOOR 1

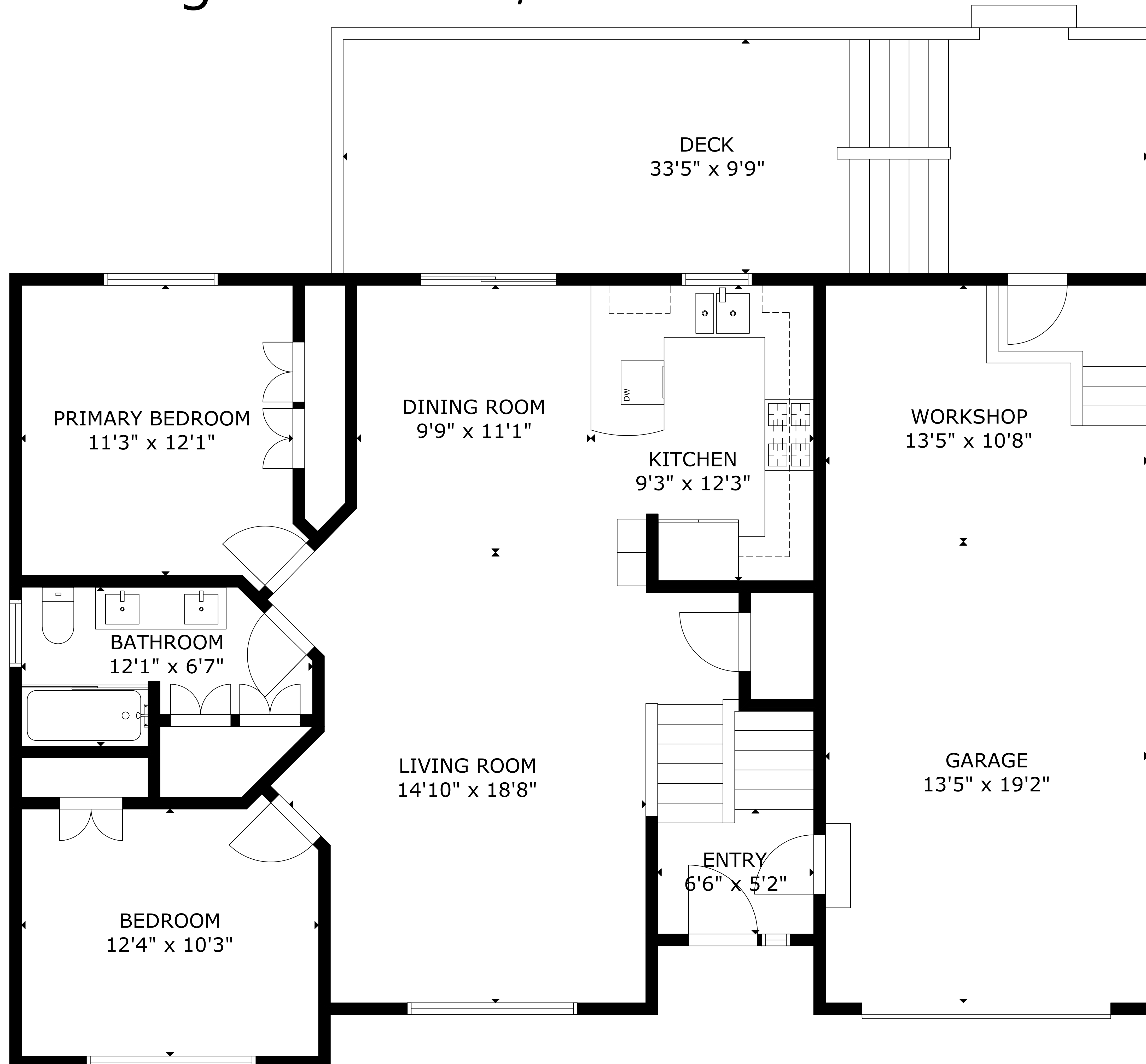
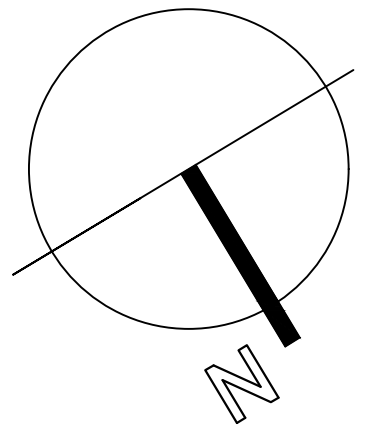


FLOOR 2

GROSS INTERNAL AREA
TOTAL: 1,931 sq ft
FLOOR 1: 943 sq ft, FLOOR 2: 988 sq ft
EXCLUDED AREAS: GARAGE: 399 sq ft, DECK: 325 sq ft
SIZE AND DIMENSIONS ARE APPROXIMATE, ACTUAL MAY VARY



22 Hebb St, Lunenburg NS B0J 2C0, CA



GROSS INTERNAL AREA

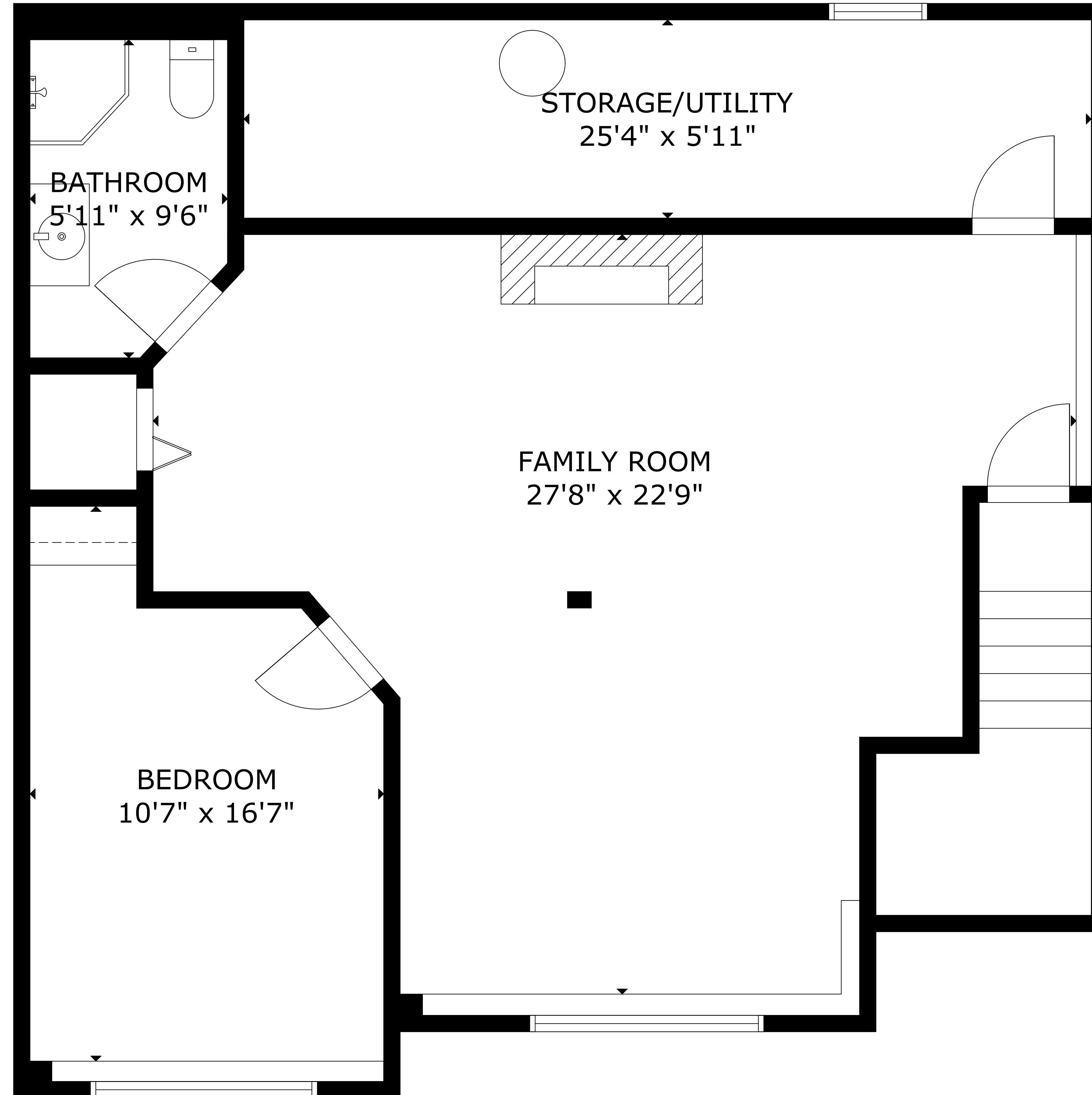
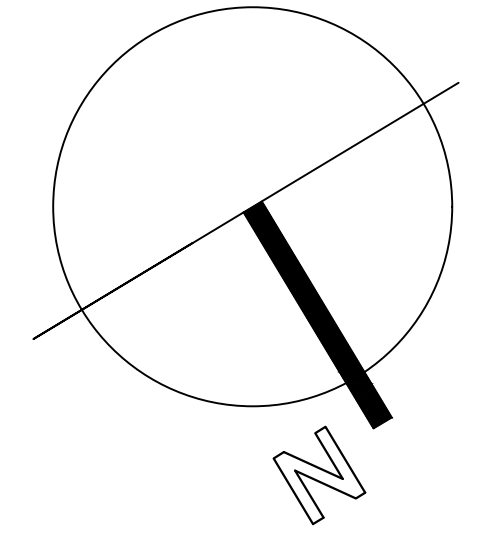
TOTAL: 1,931 sq ft

FLOOR 1: 943 sq ft, FLOOR 2: 988 sq ft

EXCLUDED AREAS: GARAGE: 399 sq ft, DECK: 325 sq ft

SIZE AND DIMENSIONS ARE APPROXIMATE, ACTUAL MAY VARY

22 Hebb St, Lunenburg NS B0J 2C0, CA



GROSS INTERNAL AREA

TOTAL: 1,931 sq ft

FLOOR 1: 943 sq ft, FLOOR 2: 988 sq ft

EXCLUDED AREAS: GARAGE: 399 sq ft, DECK: 325 sq ft

SIZE AND DIMENSIONS ARE APPROXIMATE, ACTUAL MAY VARY