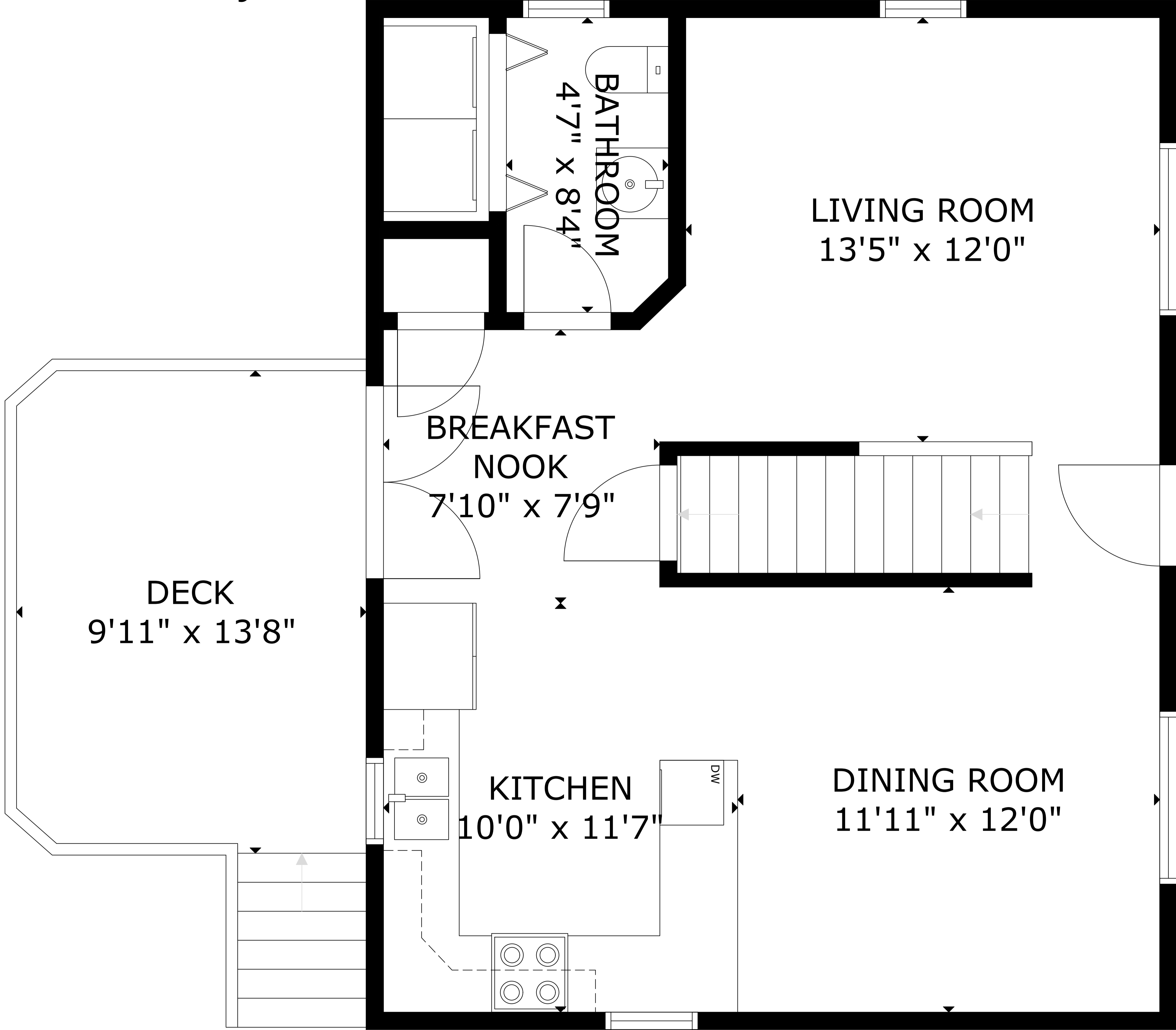
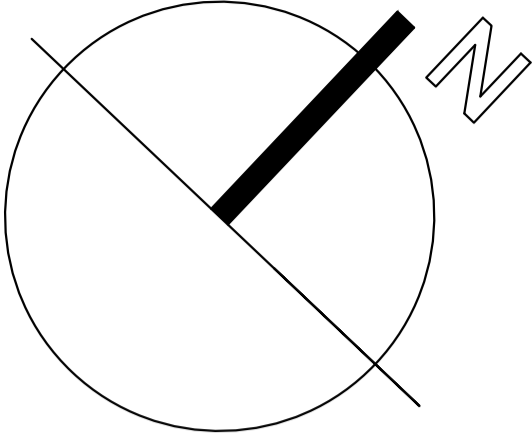


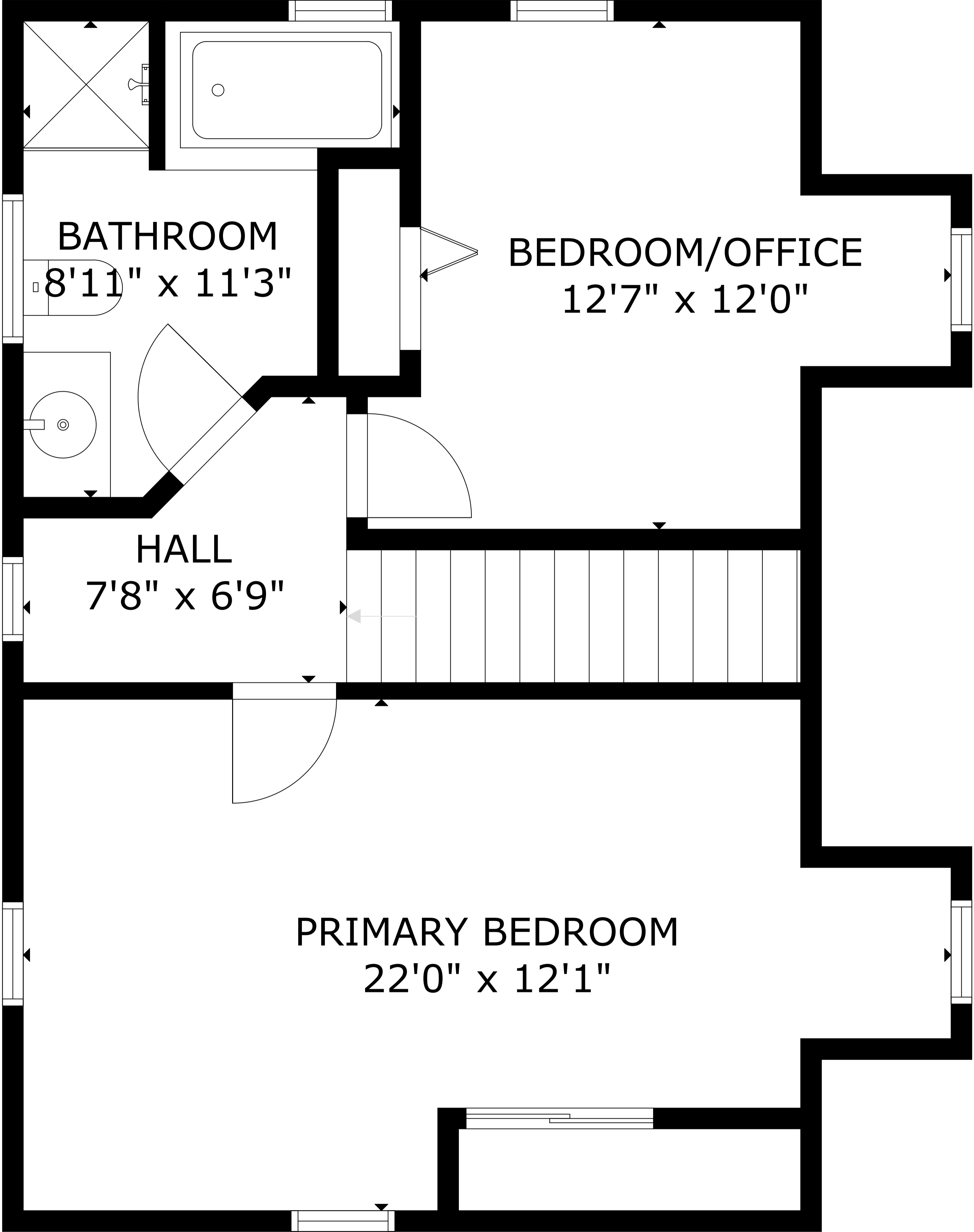
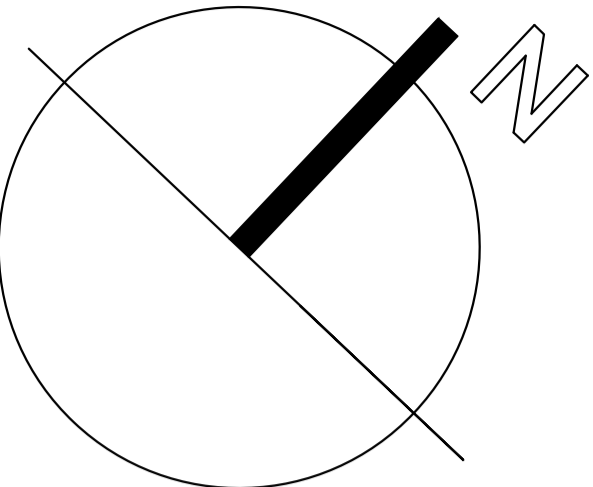
48 Pond St, Mahone Bay NS B0J 2E0, CA



GROSS INTERNAL AREA
TOTAL: 1,735 sq.ft
FLOOR 1: 571 sq.ft, FLOOR 2: 617 sq.ft, FLOOR 3: 547 sq.ft
EXCLUDED AREAS: DECK: 132 sq.ft

SIZE AND DIMENSIONS ARE APPROXIMATE, ACTUAL MAY VARY

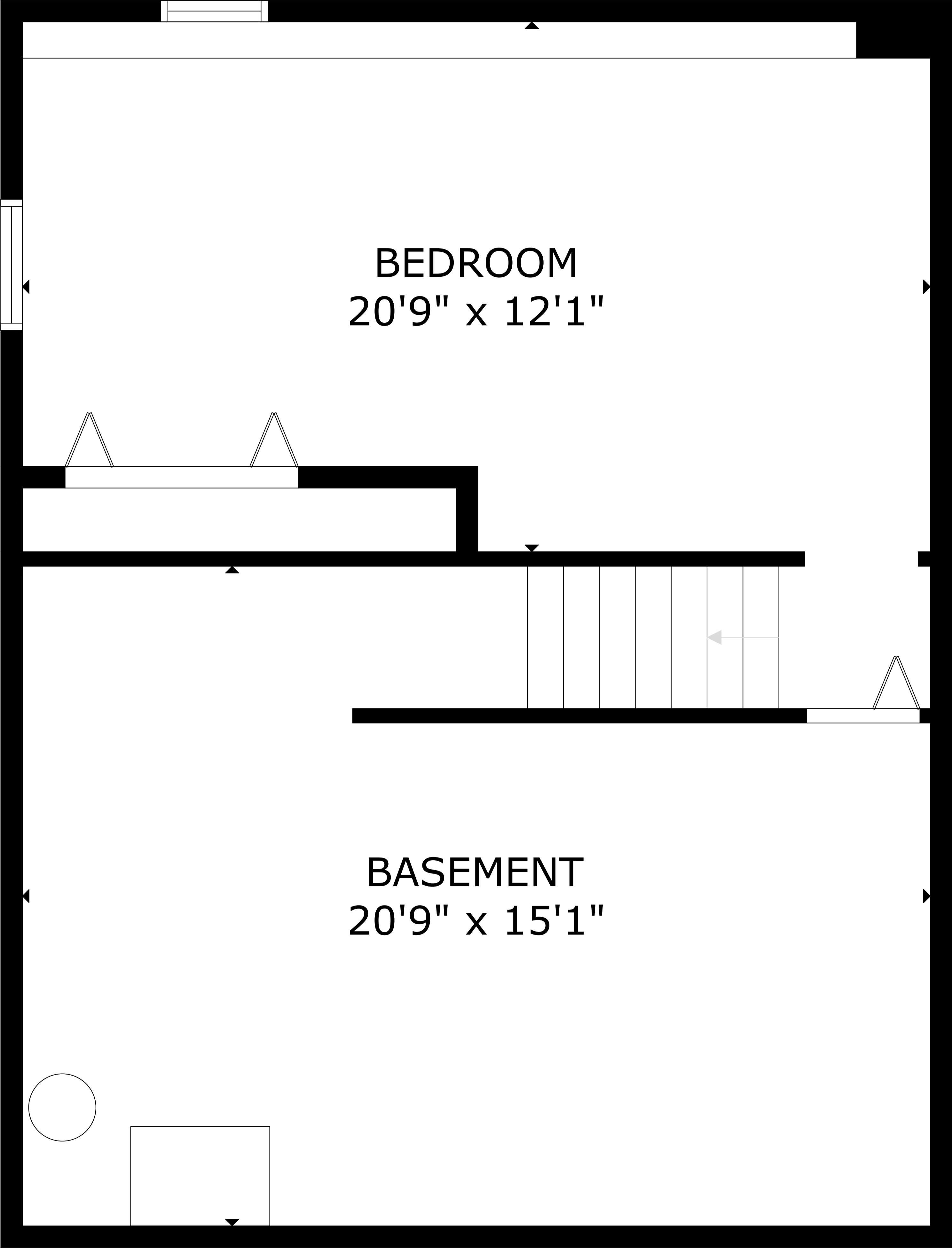
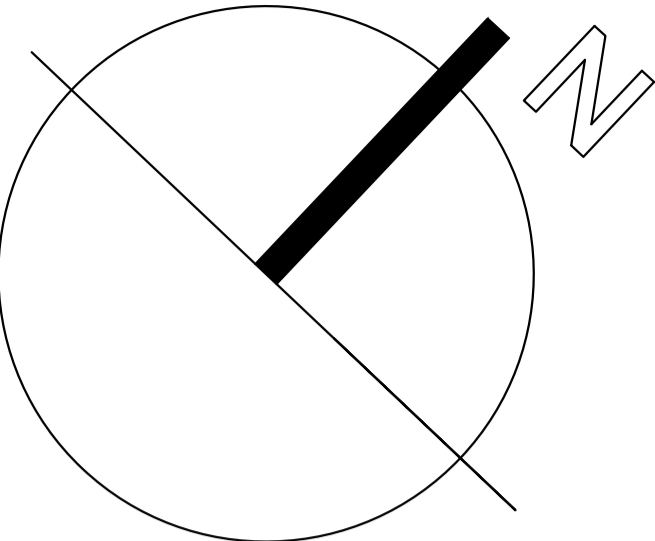
48 Pond St, Mahone Bay NS B0J 2E0, CA



GROSS INTERNAL AREA
TOTAL: 1,735 sq.ft
FLOOR 1: 571 sq.ft, FLOOR 2: 617 sq.ft, FLOOR 3: 547 sq.ft
EXCLUDED AREAS: DECK: 132 sq.ft

SIZE AND DIMENSIONS ARE APPROXIMATE, ACTUAL MAY VARY

48 Pond St, Mahone Bay NS B0J 2E0, CA

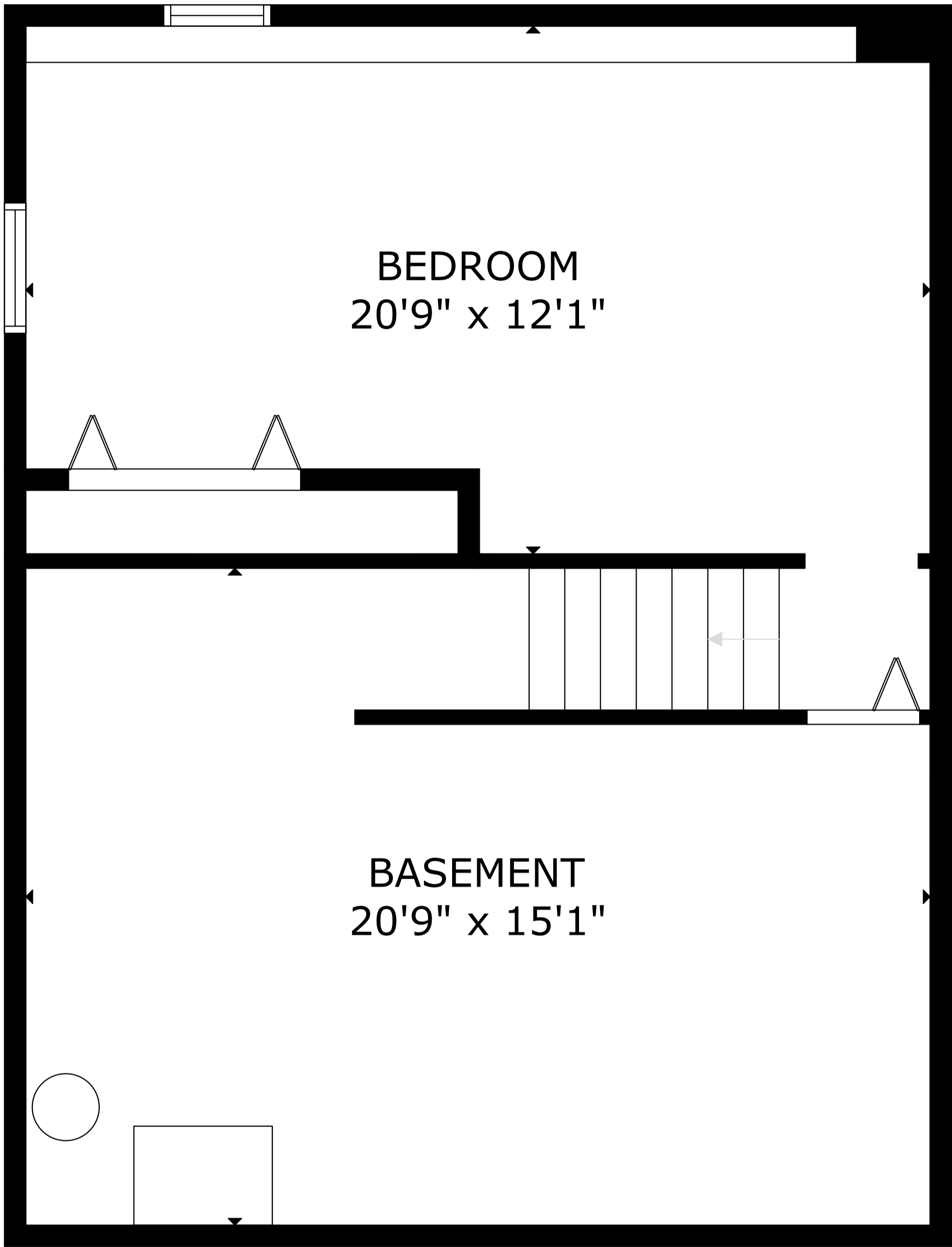
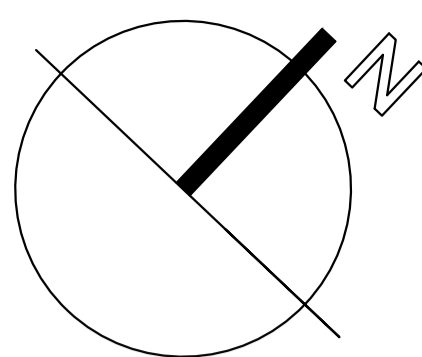


BEDROOM
20'9" x 12'1"

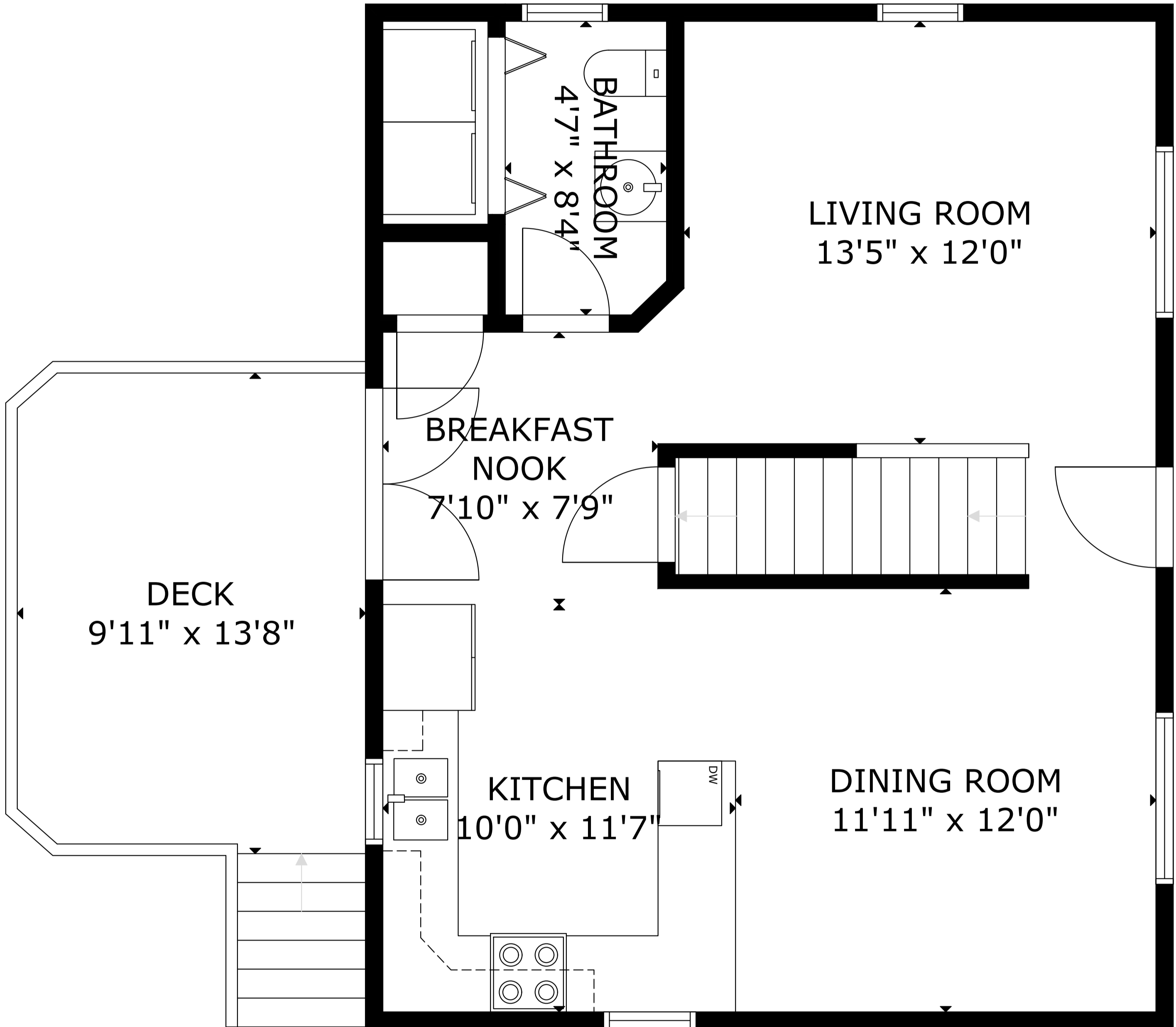
BASEMENT
20'9" x 15'1"

GROSS INTERNAL AREA
TOTAL: 1,735 sq.ft
FLOOR 1: 571 sq.ft, FLOOR 2: 617 sq.ft, FLOOR 3: 547 sq.ft
EXCLUDED AREAS: DECK: 132 sq.ft
SIZE AND DIMENSIONS ARE APPROXIMATE, ACTUAL MAY VARY

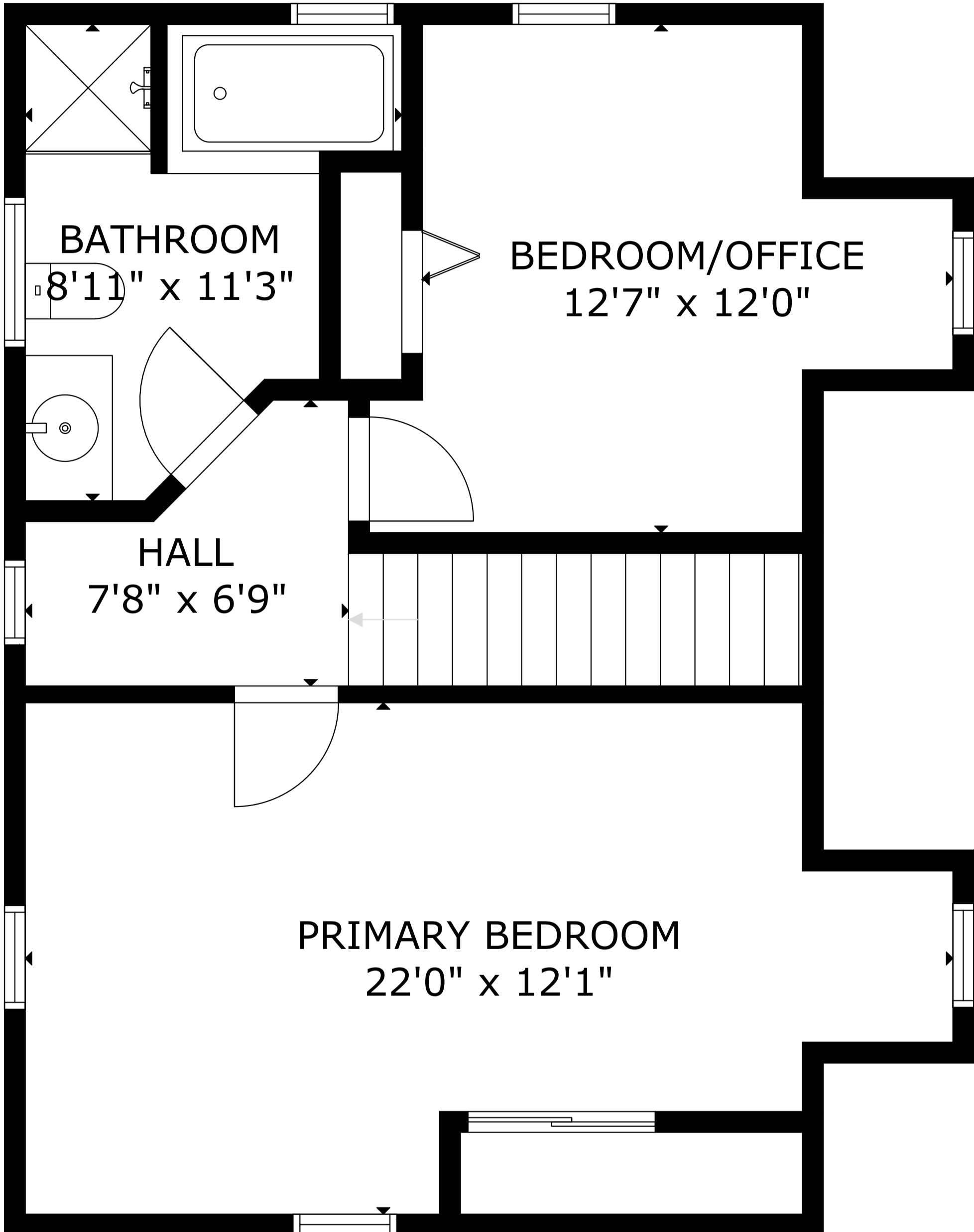
48 Pond St, Mahone Bay NS B0J 2E0, CA



FLOOR 1



FLOOR 2



FLOOR 3

GROSS INTERNAL AREA
TOTAL: 1,735 sq.ft
FLOOR 1: 571 sq.ft, FLOOR 2: 617 sq.ft, FLOOR 3: 547 sq.ft
EXCLUDED AREAS: DECK: 132 sq.ft
SIZE AND DIMENSIONS ARE APPROXIMATE, ACTUAL MAY VARY